

The background features abstract geometric shapes in teal and purple. In the top-left, there is a teal shape with a white outline and a cluster of small green dots. In the top-right, a purple shape has a white outline and a cluster of small purple dots. In the bottom-left, a purple shape contains white concentric circles. In the bottom-right, a teal shape has a white outline and a purple circle above it.

Geography



1

Greetings & Small Talk

Let's Practice

1

Family

How is your family?
Any good news?
Anyone sick?

2

School

How was school today?
What did you learn?

3

Friends

Any plans with friends
this week?



2

Vocabulary



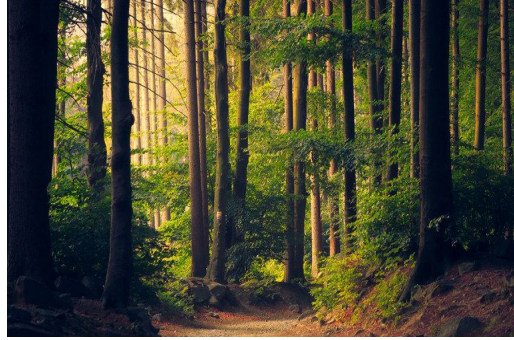


Geography

Geographical Features



A desert



A forest



A hill

Geographical Features



A lake



A cave



A mountain

Geographical Features



A river



A cliff



A sea

Geographical Features



A valley



A volcano



A waterfall

Country



countries



A city



BERLIN

**A capital
city**

Continents





3

Sentence Structure





Question:

What's in your (country)?

Answer:

There are (geographical features) and (geographical features) in (country).

Example:

There are forests and valleys in Switzerland.
There are volcanoes and rivers in Peru.





Question:

What is the capital of (country)?

Answer:

The capital of (country) is (city).

Example:

The capital of Korea is Seoul.
The capital of Canada is Ottawa.





4

Question Practice





**Which geographical
features are common
in your country?**



**What do you have
in your city?**



Features of a city:

Tall Buildings

Public Transportation

People (many)

Shops / Restaurants / Markets

Traffic (a lot of vehicles)

Bright Lights



5

Review





**Which continent is
your country in?**





**Which continent is
Canada in?**





North America



**Which continent is
Germany in?**



Arctic Ocean

North America

Atlantic Ocean

Europe

Africa

Asia

Indian Ocean

Pacific Ocean

Pacific Ocean

South America

Australia

Oceania

Southern Ocean

Antarctica



Europe



**What is the capital
city of the USA?**



Washington D.C.

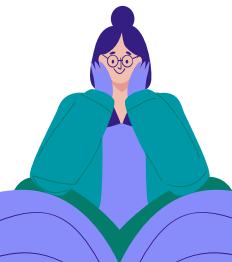


**What is the capital
city of Germany?**



Berlin

What geographical feature is this?





A forest

What geographical feature is this?



A cave

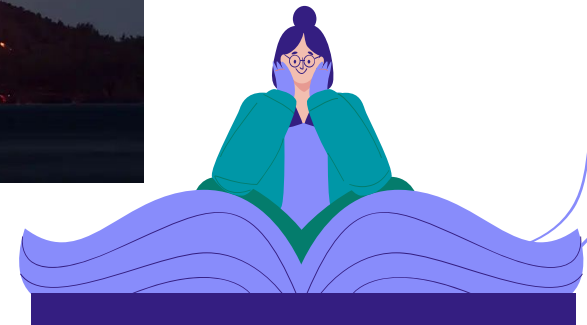
What geographical feature is this?





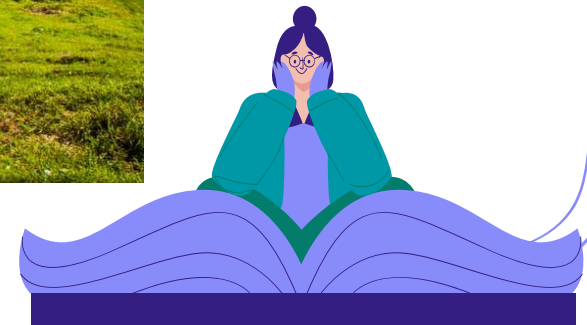
A waterfall

What geographical feature is this?



A volcano

What geographical feature is this?





A valley



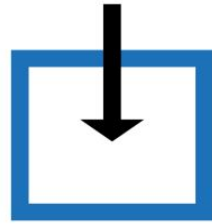
6

Grammar Practice



Prepositions of Place

in



on



at



Prepositions of Place

At

At the front desk

At the bus stop

At the store

At home

At the top of the page

Prepositions of Place

In

In the garden

In London / In Canada

In a car

In a box

In my pocket

Prepositions of Place

On

On the counter

On the sofa (couch)

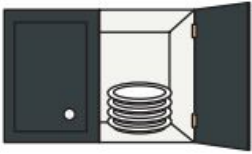
On the wall

On a bus

On a bicycle

Fill in the blank:

Statement:



The dishes are _____ the cabinet.

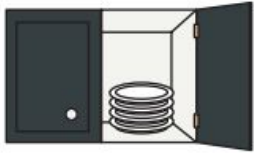
1. in

2. at

3. on

Fill in the blank:

Statement:



The dishes are _____ the cabinet.

1. **in**

2. **at**

3. **on**

Fill in the blank:

Statement:



The dog is _____ the sofa.

1. in

2. at

3. on

Fill in the blank:

Statement:



The dog is _____ the sofa.

1. in

2. at

3. on

Fill in the blank:

Statement:

We need to get (..) the train by 3:30.

1. in

2. at

3. on

Fill in the blank:

Statement:

We need to get (on) the train by 3:30.

1. in

2. at

3. on

Fill in the blank:

Statement:

Meet me () the bus stop.

1. in

2. at

3. on

Fill in the blank:

Statement:

Meet me (at) the bus stop.

1. in

2. at

3. on

Fill in the blank:

Statement:

I am (--) Japan for a business trip.

1. in

2. at

3. on

Fill in the blank:

Statement:

I am **(in)** Japan for a business trip.

1. **in**

2. **at**

3. **on**

Fill in the blank:

Statement:
She is (..) a bicycle.

1. in

2. at

3. on

Fill in the blank:

Statement:
She is (on) a bicycle.

1. in

2. at

3. on



Questions?

CREDITS: This presentation template was created by **Slidesgo**, including icons by **Flaticon** and infographics & images by **Freepik**

